

Series

MD-435 CNC
MD-640 CNC

Micro Drill - EDM drilling machine



view example MD-435 CNC

As a specialist in the field of **EDM drilling**, Heun offers the **all-round package** from development and perfecting, as well as manufacture and delivery, up to service.

The advantages at a glance

- automatic touching functions
- extensive technology database
- travel simulation in real time
- blind hole - and breakthrough mode
- electrode-Ø from 0,10 mm up to 3,00 mm
- interpolation linear / circular
- automatic electrode wear compensation
- interactive program functions
- single block and dry run simulation
- resolution 0,001 mm (servo motor)
- handwheel operation

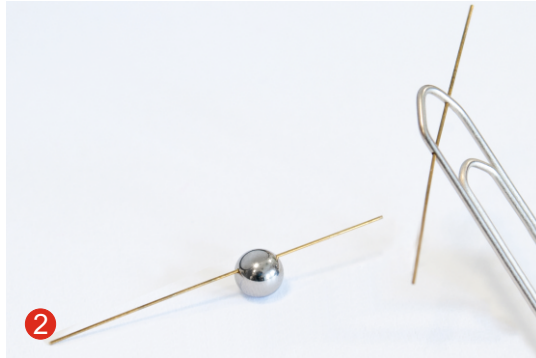




1 view example
MD-640 CNC
(changer)

3 processing example
(macro image)

2 sample machining



Other features

- stable stone table construction
- 15" touchscreen with USB interface
- spindle pitch error compensation
- adjustable stainless steel clamping strip
- servo controlled Z-axis (optional)
- Windows operating system
- programmable drilling depth & retract position
- contouring error control
- 60 /100 litre external tank and filter unit
- electrode stabilisation
- network function
- electrodes up to 400 mm length
- also available as changer & oil basin machine

Special solutions on inquiry.
Contact us!

Technical details MD-435 CNC

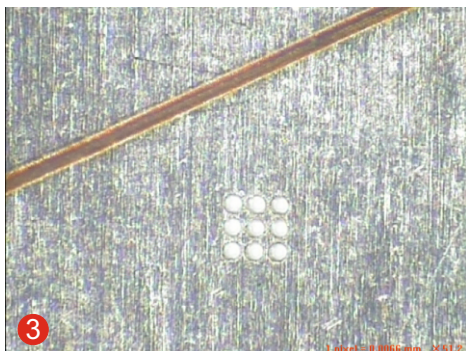
Machine dimensions WxDxH:	mm	1200x1600x2100
Machine weight:	kg	1000
Max. work piece weight:	kg	350
Travel X/Y/Z/W	mm	400/350/240/300
Clamping area:	mm	730x560
Electrode diameter/length:	mm	0.1 - 3.0/400
	mm	optional 0.08-6.0

Technical details MD-640 CNC

Machine dimensions WxDxH:	mm	1500x2000x2100
Machine weight:	kg	1200
Max. work piece weight:	kg	600
Travel X/Y/Z/W	mm	600/400/240/300
Clamping area:	mm	980x700
Electrode diameter/length:	mm	0.1 - 3.0/400
	mm	optional 0.08-6.0

Standard accessories

- 1 set tools and accessories in tool box
- 1 pc. ceramic guide Ø 1,0 mm
- 20 pcs. brass electrodes Ø 1,0 mm, single



Technical subject to change!